

Economic Outlook and Revenue Assessment Committee



John Grossenbacher

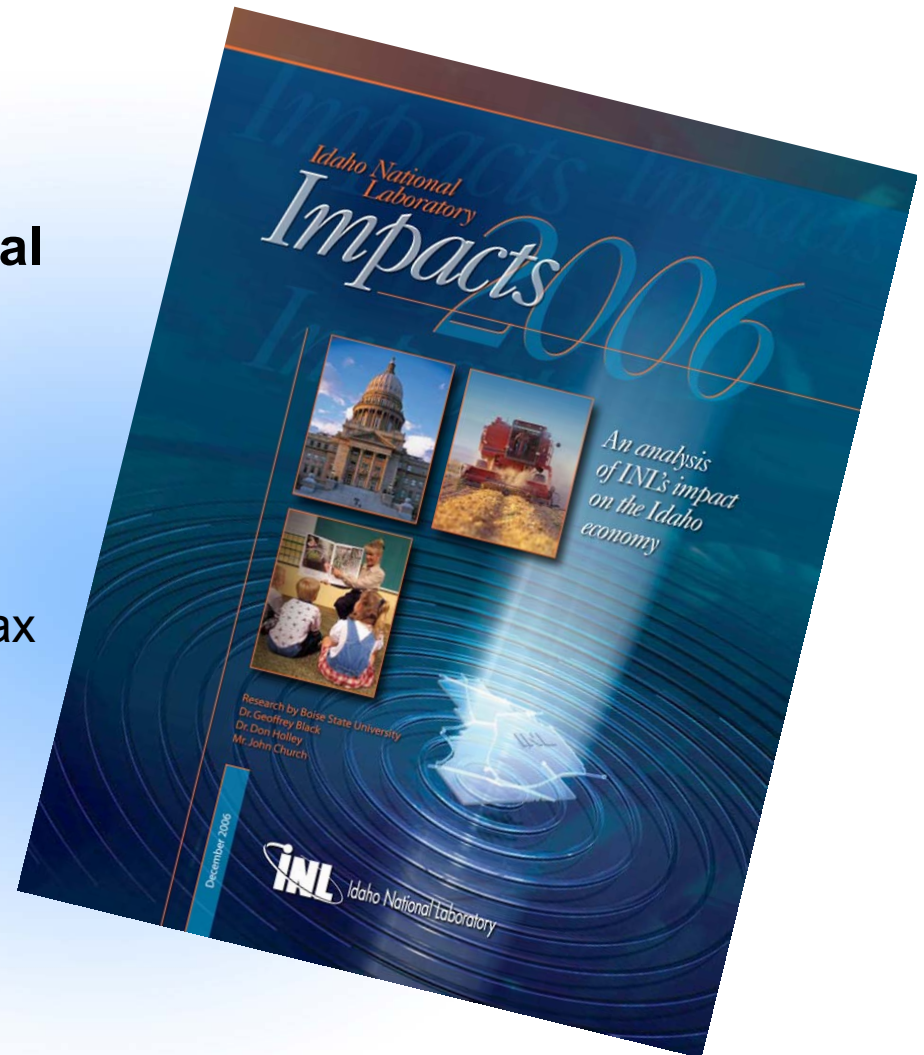
Director, Idaho National Laboratory

January 4, 2008



INL's Economic Impact—2006 Report

- **3rd largest employer in Idaho**
 - 2.7% of Idaho employment
- **Accounts for 2.52% of personal income in Idaho**
 - Direct and secondary effects of personal income equal \$1.108 billion annually
- **\$85M annual tax revenue**
 - Accounts for 3% of total Idaho tax revenue
- **\$3.4M annually to state education, \$1.2M to Idaho Universities**





INL Continues to Deliver Value to the Community and the State

Community Outreach

- Team INL has supported 46 projects since its inception in 2006
 - Team INL delivered 8500 pounds of canned food plus \$1600 to the Idaho Falls Food Bank
- Unprecedented Openness
 - 171 Speaking engagements through the INL Speakers Bureau
 - 214 tours to INL facilities with over 4000 visitors



**FY2007 BEA Contributed
~\$715,000 to Our Local
Community**



**INL Employees
Contribute
\$318,114
to the local
United Way**



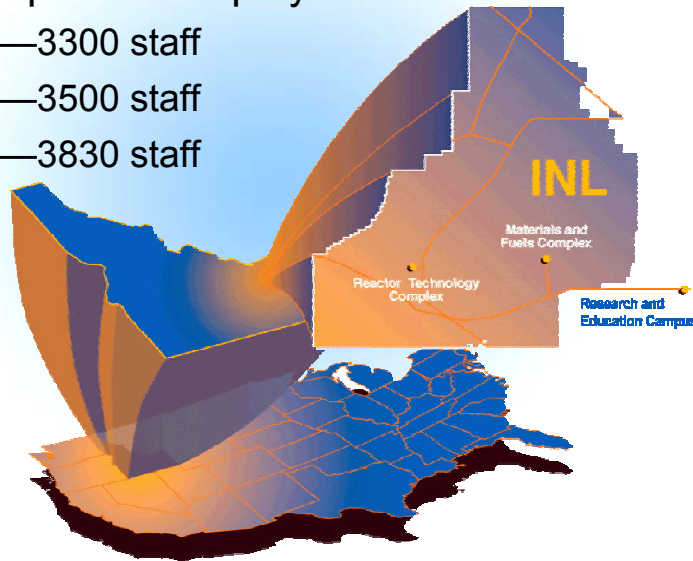
INL's Economic Impact—2007

■ FY-2007 Business Volume of \$739.5M

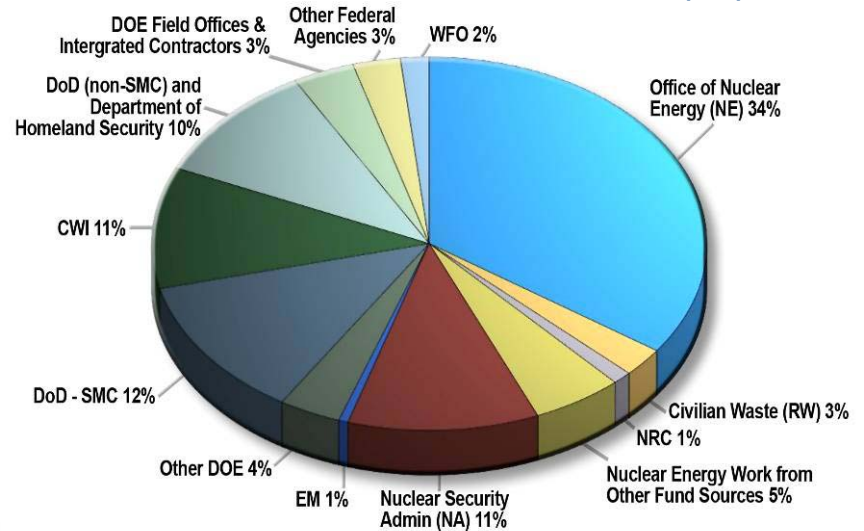
- 8% growth from FY06, 38% since 2005 with an expanded customer base
- Payroll of 248M

■ Employment

- INL is Eastern Idaho's largest employer and one of the state's top three employers
 - 2005—3300 staff
 - 2006—3500 staff
 - 2007—3830 staff



INL Business Volume FY2007 \$739.5 (\$M)



■ Procurement

- Purchased more than \$107M worth of goods & services from Idaho large and small businesses in FY-2007

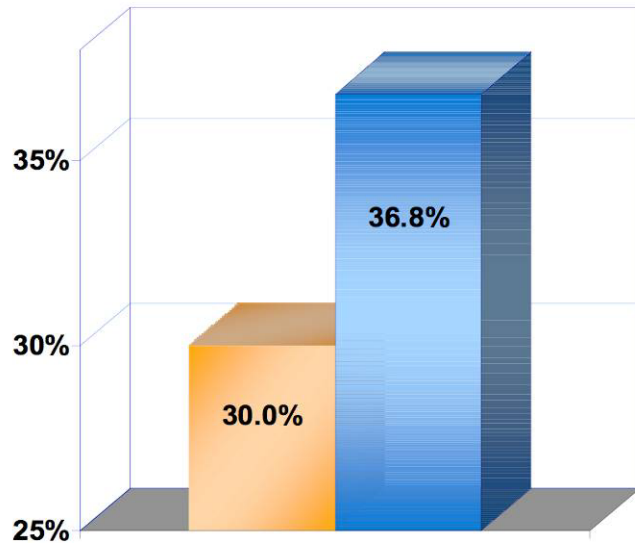


INL's Economic Impact— Small Business 2007

**FY07 Goal Estimated Procurement
Volume - \$260,000,000**

**Actual Procurement Volume through
09/30/07 - \$368,676,470**

Goal & Attainment by Percent

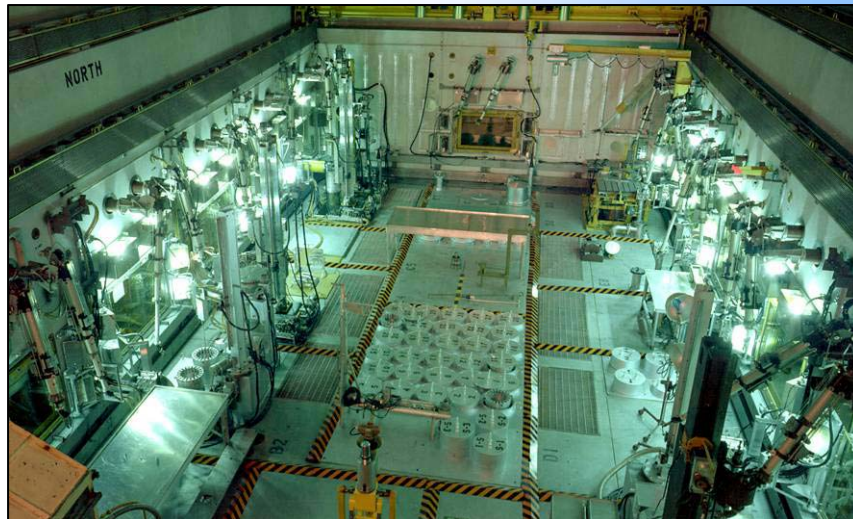


Small Business Category	INL FY07 Goals	INL FY07 Attainment
Small Business	30.0%	36.8%
HUBZone Small Business	3.0%	1.9%
Small Disadvantaged Business	4.0%	5.5%
8(a) Special Certification	2.0%	3.3%
Women-Owned Small Business	4.0%	5.4%
Veteran-Owned Small Business	2.0%	3.3%
Service-Disabled Veteran-Owned Small Business	1.0%	1.1%
Native American Small Business	1.0%	1.9%



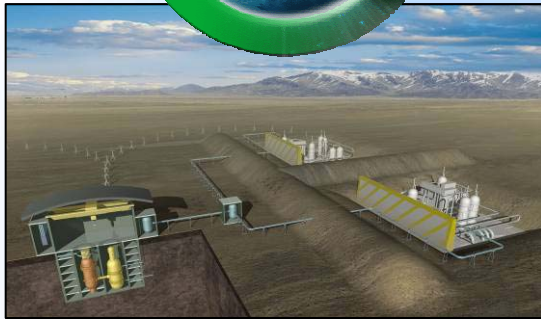
Outlook for 2008

- 5% Growth
- Diversification
- Revenue and FTE linkage
- Value Decisions
- Impactful Capability





Opportunities and Risks for 2008 and Beyond



■ Opportunities:

- Global Nuclear Energy Partnership (GNEP)
- Next Generation Nuclear Plant (NGNP)
- National and Homeland Security has seen tremendous growth over the last couple years
- Energy and Environmental work that is important to our State and Region

■ Risks:

- Future appropriations
- Competition
- Administration change and reduction in investment in Nuclear Energy R&D

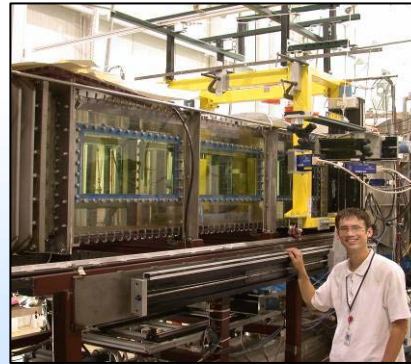
There remain uncertainties with the projected growth in funding and our role in the major programs



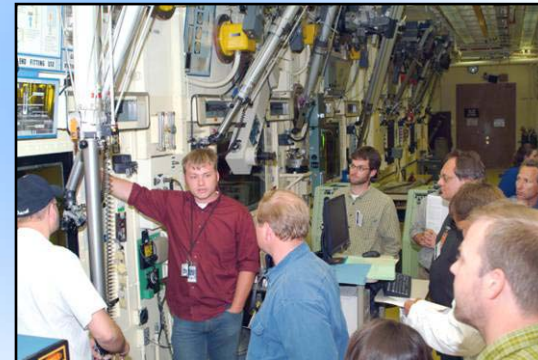
Status Report— Center for Advanced Energy Studies (CAES)

■ INL Continuing Commitments

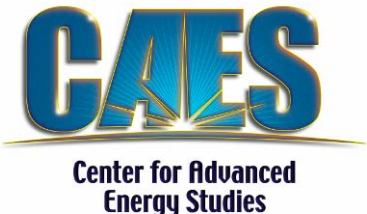
- Educational Contracts for Faculty Support
- Joint Appointments for CAES-related Faculty Positions
 - CAES Associate Directors
 - Sponsored Research Collaborations
- Internships
- Laboratory Directed Research and Development Funding
 - Research Equipment
- Program Development Funding
- Building Lease Payments
- **Total annual INL investment >5M**



State's Investment will Develop CAES as a Regional Center for Energy-Related R&D, Education, and Policy



Construction Complete 2008





Status Report—ATR National Scientific User Facility (ATR NSUF)

■ ATR NSUF up and running

- Making the link to nuclear education and industry real
- A recognized center of excellence for nuclear energy
- A unique forum for R&D collaboration within the nuclear community

■ September 2007

- User Facility Workshop

■ January 2008

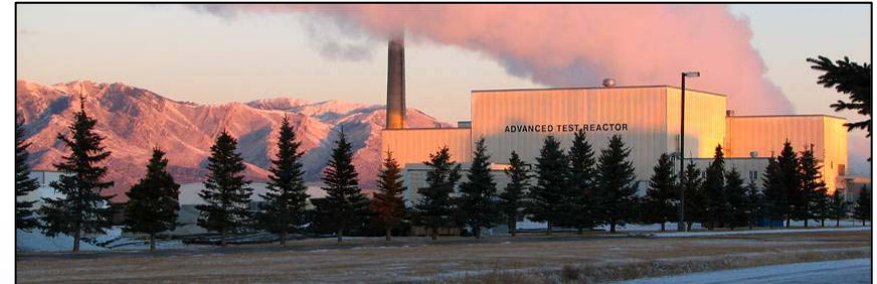
- Announce ATR NSUF Summer School

■ March 2008

- Announce selection of the first user experiments

■ September 2008

- First experiment in ATR

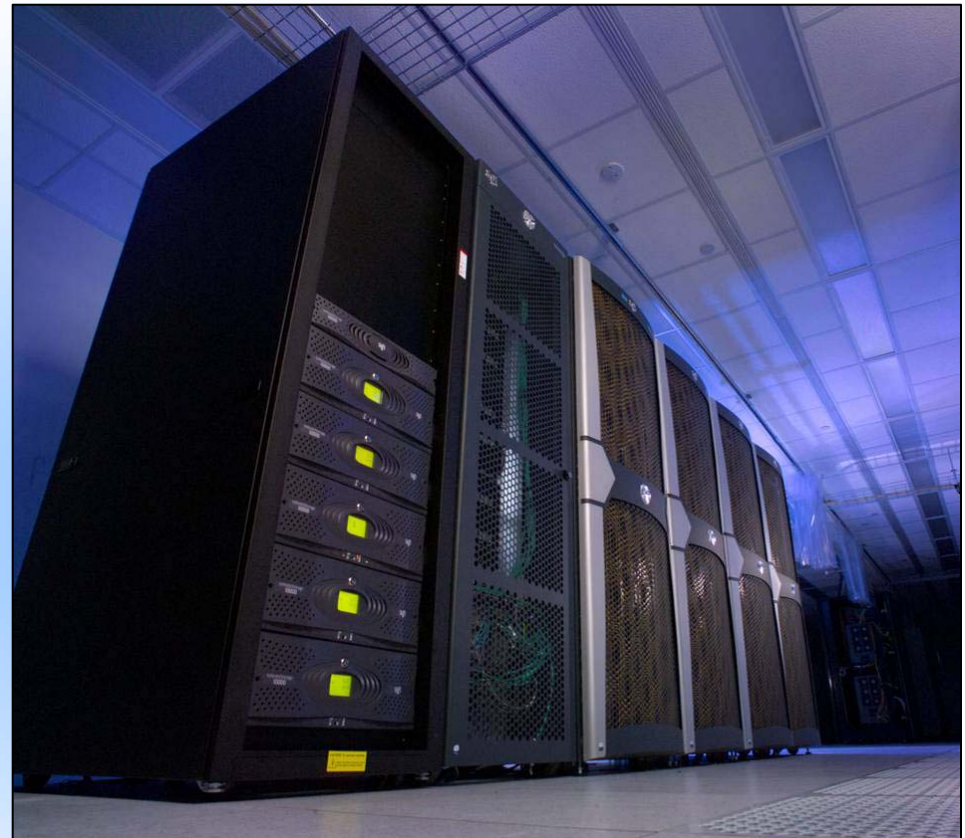
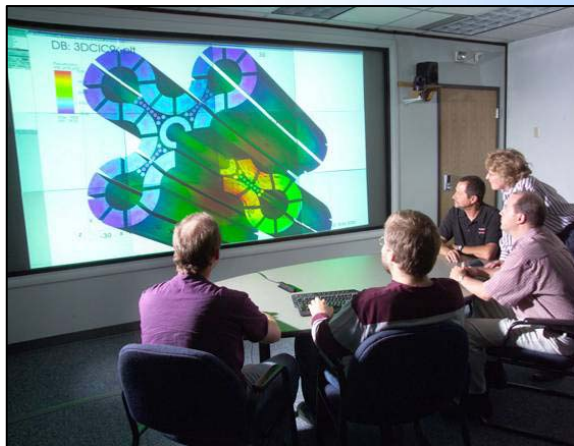


ATR
NATIONAL SCIENTIFIC
USER FACILITY



Status Report— INL's High-Speed Computing Center

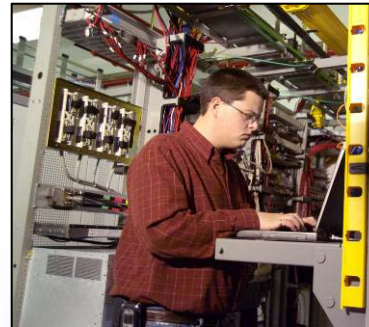
- A key tool in the design and development of the next generation nuclear reactors
- Rated 64th in the world in computational speed
- New Computing Center accommodates planned growth





INL's Investment in Idaho Universities

- **Ten new nuclear energy faculty hired at Idaho Universities**
 - 100 nuclear engineering students
- **Researcher and student involvement via CAES investment**
 - 12 projects, 40 researchers, 20 students
- **Broad University engagement**
 - 23 Post Doc, 268 Interns in FY 2007
 - 49 university faculty on INL advisory boards
 - \$1,200,000 in research contracts with Idaho research universities



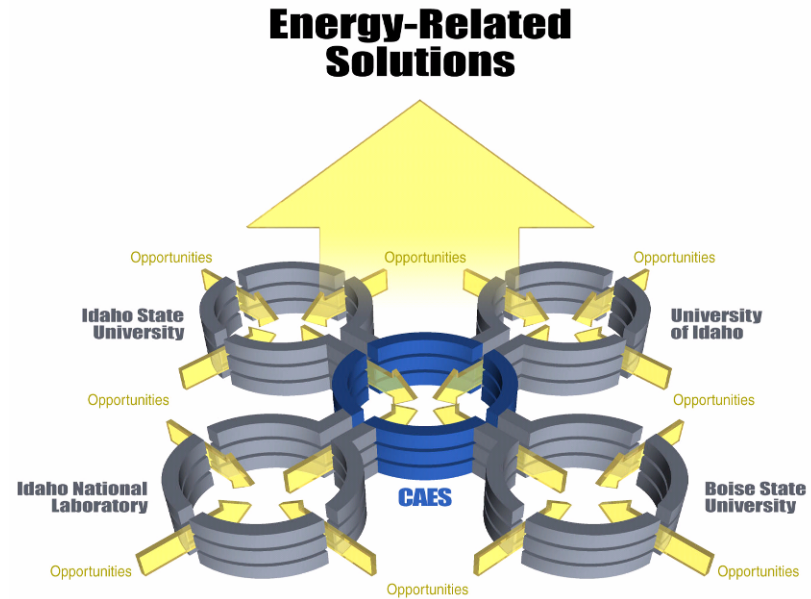
INL is making an investment in Idaho's education system to lay the foundation for graduates to participate effectively in a world increasingly shaped by science and technology





What the State of Idaho Can do for the INL?

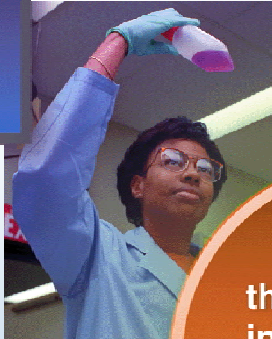
- **CAES requires the commitment of new university/State resources to fully realize the long term research and education benefits**
- **Infrastructure support/teaming**
- **Transportation Safety**





Idaho National Laboratory Vision

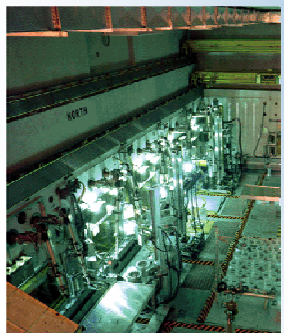
Foster education, research, industry, government and international collaborations to produce the needed investment, programs and expertise



Become a leading clean energy RD&D laboratory and a regional resource



Become the preeminent internationally-recognized nuclear energy RD&D laboratory



Develop world-class nuclear energy capability



Become a major center for national and homeland security technology RD&D



The U.S. National Nuclear Laboratory with Multi-program Capabilities